

Z-FLEX® Chimney Liner Systems

Z-FLEX Insul-Liner®

Pre-Insulated Chimney Liner for Category 1 Natural Draft Gas Heating Equipment & Gas Fireplaces

- **Insul-Liner®** is another "simple solution" from **Z-FLEX®**. The National Fuel Gas Code (NFPA 54, ANSI Z223.1) recommends that liners be insulated in certain situations.
- A good rule of thumb is to use an insulated liner in exterior chimneys or when a brick chimney has no clay liner at all. The insulation will keep the flue gases warm to prevent condensation. Also refer to the equipment manufacturer's instructions for their recommendations.
- **Insul-Liner®** replaces B-Vent when relining a masonry chimney.
- **Insul-Liner®** is insulated at the factory and protected with an outer aluminum jacket. This eliminates the time needed to insulate on the job site and prevents damage to the insulation during installation. Simply remove from the box and install.

Insul-Liner® Kit Includes:

Insulated Aluminum Liner
Chimney Flashing
Rain Cap
Mortar Collar
3 Screws
Part No.: 2GIAKXX
Dia.: ____ | Lgth.: ____
Dia.: 3", 4", 5", 6", 7", 8"
Lengths: 15'



Insul-Liner® Gas Fireplace Kit Includes:

Insulated Aluminum Liner
Chimney Flashing
Rain Cap
Fireplace Connector
3 Screws
Part No.: 2GIAFKX
Dia.: ____ | Lgth.: ____
Dia.: 4", 5", 6" Lengths:
15ft.



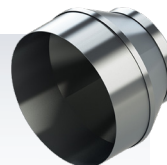
Fireplace Connector

Gas Fireplace Kits only.
Part No.: 2ZSCPRP
Dia.: ____
Dia.: 3", 4", 5", 6", 7", 8"



Nose Cone

Part No.: 2NCXXXX
Dia.: ____
Dia.: 3", 4", 5", 6", 7", 8", 10"



Liner Coupling

Part No.: 2CNNTRG
Dia.: ____
Dia.: 3", 4", 5", 6", 7", 8", 10"
Custom sizes available. Used to attach two lengths of vent.



Universal B-Vent Connector

Part No.: 2CNNBFC
Dia.: ____
Dia.: 3", 4", 5", 6", 7", 8", 10"
Connects any B-Vent to Z-FLEX® liner.



Additional Length Aluminum 2-Ply Liner

Part No.: 2GAXXXX
Dia.: ____ | Lgth.: ____
Dia.: 3", 4", 5", 6", 7", 8", 10"
Available in multiples of 5ft. to 50ft..

