

LARGE DIAMETER PVC TRANSITION FITTINGS

647-PG SERIES

MetalHead™

SPECIFICATION

Sioux Chief ASTM F1970 fittings are to be used in conjunction with tube and piping systems conforming to ASTM D2466 (Sch. 40) PVC. Sioux Chief PVC transition fittings shall be used in plumbing systems for safe distribution of cold water. Fittings shall be used for fluid communication with plumbing devices and fixtures. Transition fittings shall be listed to appropriate standards including ASTM fitting end specifications. Fittings shall be generally manufactured by forming brass to capture PVC ends thereby protecting/shrouding connection ends.

MATERIALS

Plastic: PVC

Brass: No Lead, Dezincification (DZR) resistant & Stress Corrosion Cracking (SCC) resistant

O-ring: EPDM

CERTIFICATIONS

cUPC

INSTALLATION LIMITATIONS

Do Not expose PVC transition fitting to heat above those listed on tubing. Excessive heat will damage the integral o-ring seal. Do not install damaged fittings. Do not alter fittings. Do not solder or braze in close proximity to fitting unless it is protected with a heat-blocker to protect/keep the fitting under 140°F. Keep fitting free from hazardous chemicals or chemical vapors.

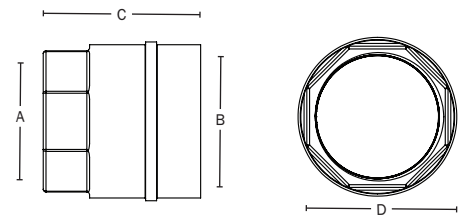
DIMENSIONS

	647-PG4	647-PG5	647-PG6	647-PG7
A: FIP thread connection	1"	1¼"	1½"	2"
B: PVC Sch. 40 socket connection	1"	1¼"	1½"	2"
C: Overall height	2½"	2½"	2¾"	2⅞"
D: Overall hex width across flats	1¾"	1⅞"	2⅛"	2⅞"

ITEM # SUBMITTED	_____
JOB NAME	_____
LOCATION	_____
ENGINEER	_____
CONTRACTOR	_____
PO#	_____ TAG _____



647-PG7



Create Item Number

647-PGA

e.g. **647-PG5:** 1¼" PVC socket × 1¼" FIP

CONNECTION SIZE A

4 = 1" PVC socket × FIP

5 = 1¼" PVC socket × FIP

6 = 1½" PVC socket × FIP

7 = 2" PVC socket × FIP