

Low Water Cut-Offs – Electronic For Hot Water Boilers

RB-122-E

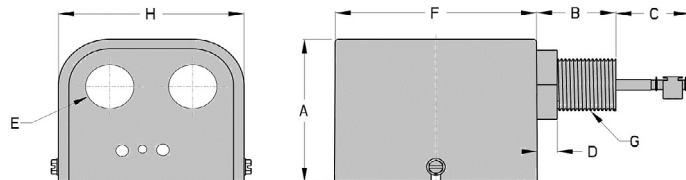
Low Water Cut-Offs



- For residential and commercial applications
- Electronic operation
- Easy to install and wire
- Red LED indicating low water condition
- Green LED indicating power is on
- Test button
- Automatic reset
- No blow down required
- 20,000 ohms probe sensitivity
- Maximum ambient temperature 120°F (49°C)
- Maximum water temperature 250°F (121°C)
- Maximum water pressure 160 psi (11.2 kg/cm²)



RB-122-E



Electrical Ratings

Voltage	Power Consumption	Load Switching
120 VAC	3.1 VA	5.8 A at 120 VAC

Dimensions, in. (mm)

A	B	C	D	E	F	G NPT	H
2 ⁷ / ₈ (72)	1 ⁷ / ₁₆ (36)	1 ⁵ / ₁₆ (34)	3 ⁸ / ₈ (9)	7 ⁸ / ₈ (22)	3 ⁵ / ₈ (92)	3 ⁴ / ₄	3 ³ / ₈ (85)

Ordering Information

Model Number	Part Number	Description	Weight lbs. (kg)
RB-122-E	144703	Low water cut-off	1.7 (.78)