



Model: CRQ01

Size: 1/2", 3/4", 1"

Length: 165mm/6.5inch

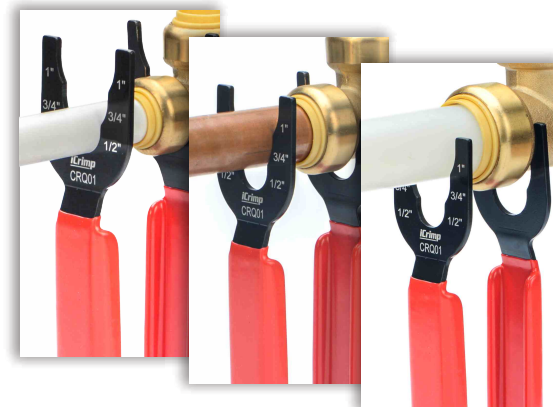
Weight: 0.19kg/0.42lb

Grip Material: rubber dipped

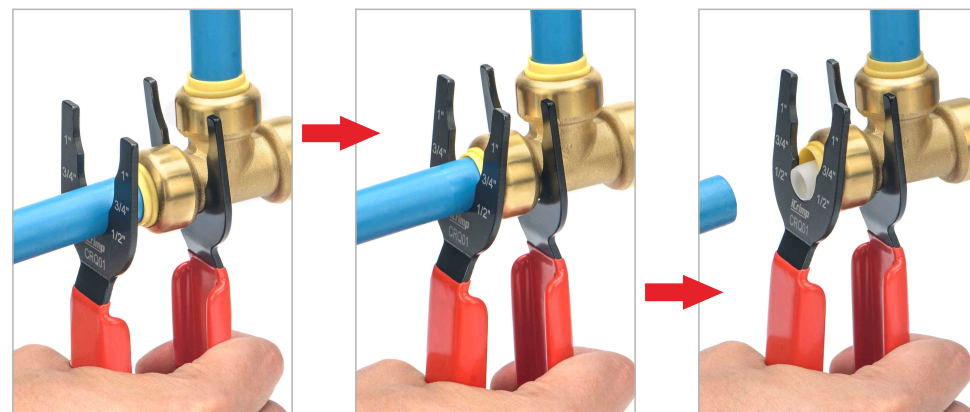


ONE TOOL FITS THREE SIZE

No interchangeable faceplates required



HOW TO DISCONNECT



Step 1: Place the teeth around the fitting assembly. The fork end with the iCrimp logo should be positioned around the tube to against the release collar and the other end around the neck of the fitting.

Step 2: Squeeze the tool with one hand and pull the tube with a twisting action with the other hand to release the tube.

Model: CRQ02

Size: 1/2", 3/4", 1"

Length: 230mm/9.06inch

Weight: 0.33kg/0.72lb

Grip Material: TPR

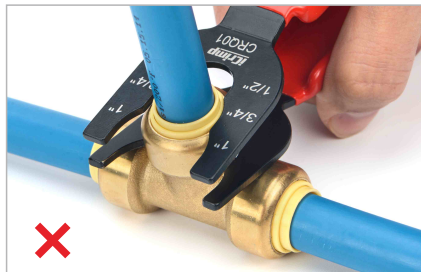


TIPS

For Disconnect 1/2" Brass Push Tee



With 3 sizes in one faceplate design, you might not be able to remove the PEX tubing from the middle part of 1/2" Brass Push Tee, here are the solutions:

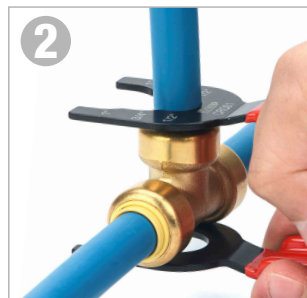
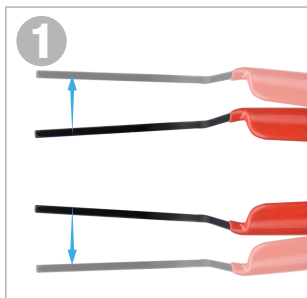


Plan A

Applicable to CRQ01 & CRQ02

The fork end with the iCrimp logo must be faced down and positioned around the tube. Use your hand to press this single faceplate to against the release collar and pull the tube with a twisting action with the other hand to release the tube.

OR



Plan B

Applicable to CRQ01

- ① Unfold the faceplates slightly to make the distance wider.
- ② The fork end with the iCrimp logo should be positioned around the tube to against the release collar.

iCrimp



PEX DISCONNECT TOOL

for Push-to-Connect fittings

CRQ01 & CRQ02

iCrimp

— focus on cable & pipe tools

Thank you for trusting and choosing iCrimp. We're now transferring the product line PEX PIPE TOOLS from master brand IWISS to our subbrand iCrimp in a strategic adjustment. We hereby promise that tools marked with iCrimp logo are manufactured by genuine IWISS.

Any doubts or questions, please feel free to contact our customer service team.

MANUFACTURER:

ZHEJIANG IWISS ELECTRIC CO.,LTD
(IWISS TOOLS CO.,LTD)

Add: NO.2789 Liule Rd, Yueqing, 325600, Zhejiang, China

ZHEJIANG IWISS ELECTRIC CO., LTD