

# LANCER



## Gas Fired, Chimney Vented, Cast Iron Water Boiler

*With Integrated Rear Draft Diverter*

- Enhanced design for greater value and ease of installation
- 84% AFUE
- Premium control set
  - Hydrostat 3200, pre-installed LWCO
  - Resideo S8610 ignition
- Reliable, American-made cast iron heat exchanger
  - Greater turbulence inside sections, promotes efficient heat transfer
  - Steel connections between sections
  - Industry standard tapping locations
- Stainless steel burners
- Clean appearance
  - Controls & components concealed in vestibule
- Taco® 007e or Grundfos® Alpha2 circulator
- 5 sizes available, 38-170 MBH
- Lifetime limited warranty

**ARCHER**  
BOILERS

# LANCER

## Standard Equipment

- Integrated draft diverter, automatic damper and harness connector
- Insulated powder coated steel jacket
- Heavy gauge 1" base insulation
- Hydrostat® 3200 three-function hydronic control w/digital display
  - Primary circulator control
  - LWCO, auto or manual reset
  - Thermal targeting or optional ODR
  - Pre-purge latent heat circulation
- Step-opening redundant gas valve
- Spark ignition with continuous retry
- Stainless steel precision burners
- User-friendly wiring with 120V J-box
- ECM Circulator – choice of Taco or Grundfos
- Resettable blocked vent switch
- Boiler drain valve
- Cast iron supply manifold with safety relief valve tapping

## Fuel Conversion Kits

| Fuel              | Boiler Sections | Part Number |
|-------------------|-----------------|-------------|
| LP to Natural Gas | 2               | 111301-01   |
|                   | 3-6             | 110927-01   |
| Natural Gas to LP | 2               | 111302-01   |
|                   | 3-6             | 110928-01   |

## Ratings

| Model     | Input <sup>1</sup> (MBH) | DOE Heating Capacity (MBH) | AHRI Net Rating <sup>2</sup> (MBH) | AFUE (%) |
|-----------|--------------------------|----------------------------|------------------------------------|----------|
| LCR-2-038 | 38                       | 32                         | 28                                 | 84.0     |
| LCR-3-068 | 68                       | 57                         | 50                                 | 84.0     |
| LCR-4-102 | 102                      | 85                         | 74                                 | 84.0     |
| LCR-5-136 | 136                      | 114                        | 99                                 | 84.0     |
| LCR-6-170 | 170                      | 142                        | 123                                | 84.0     |

Input ratings shown can be used for elevations up to 2,000 ft. For elevations 2,000 ft. or higher, reduce input rate to 4% per 1,000 ft above sea level.

The net AHRI water ratings shown are based on a piping and pickup allowance of 1.15. The manufacturer should be consulted before selecting a boiler for installations having unusual piping and pickup requirements, such as intermittent operation, extensive piping systems, etc.

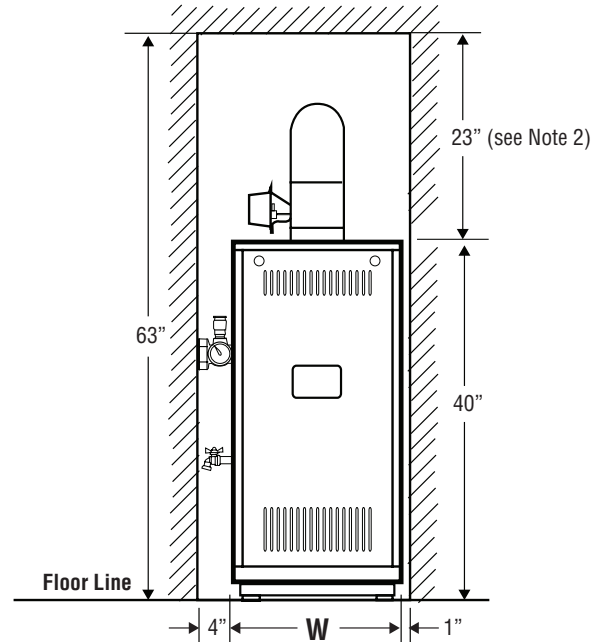
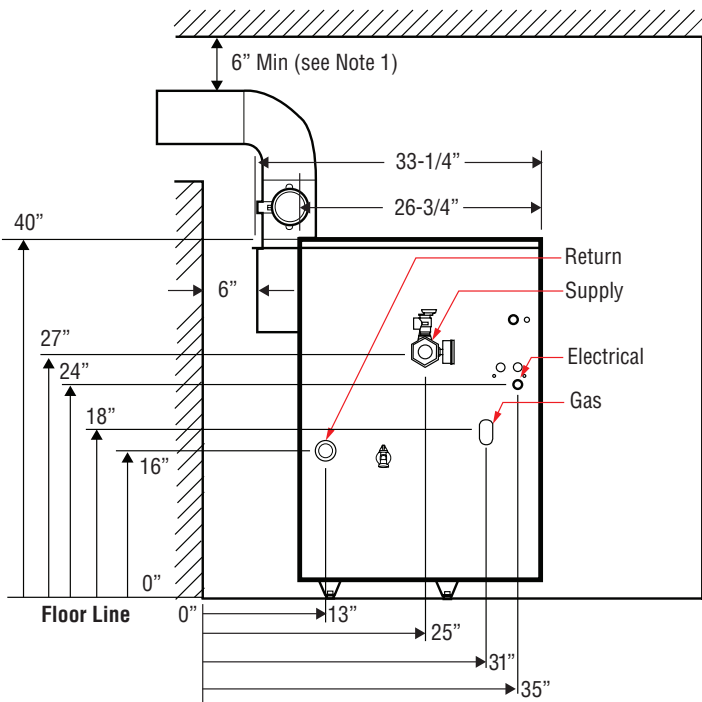
All models include 30 psi relief valve, MAWP is 50 psi.

## Dimensions (inches)

| Model     | Sections | Depth | "W" | Vent | Gas NPT | Supply | Return |
|-----------|----------|-------|-----|------|---------|--------|--------|
| LCR-2-038 | 2        | 27    | 14  | 4    | 1/2     | 1-1/4  | 1-1/4  |
| LCR-3-068 | 3        | 27    | 14  | 4    | 1/2     | 1-1/4  | 1-1/4  |
| LCR-4-102 | 4        | 27    | 16  | 5    | 1/2     | 1-1/4  | 1-1/4  |
| LCR-5-136 | 5        | 27    | 19  | 6    | 1/2     | 1-1/4  | 1-1/4  |
| LCR-6-170 | 6        | 27    | 22  | 6    | 1/2     | 1-1/4  | 1-1/4  |

## Weights (lbs.) & Volume (gal.)

| Model     | Ship Weight | Water Content |
|-----------|-------------|---------------|
| LCR-2-038 | 202         | 1             |
| LCR-3-068 | 254         | 2             |
| LCR-4-102 | 304         | 3             |
| LCR-5-136 | 357         | 4             |
| LCR-6-170 | 405         | 5             |



### NOTES:

1. Minimum radial distance around vent pipe and breeching for single-wall metal pipe vent connector, otherwise follow vent connector manufacturer's recommended clearances.
2. Add height required to maintain 6" clearance from all breeching components.