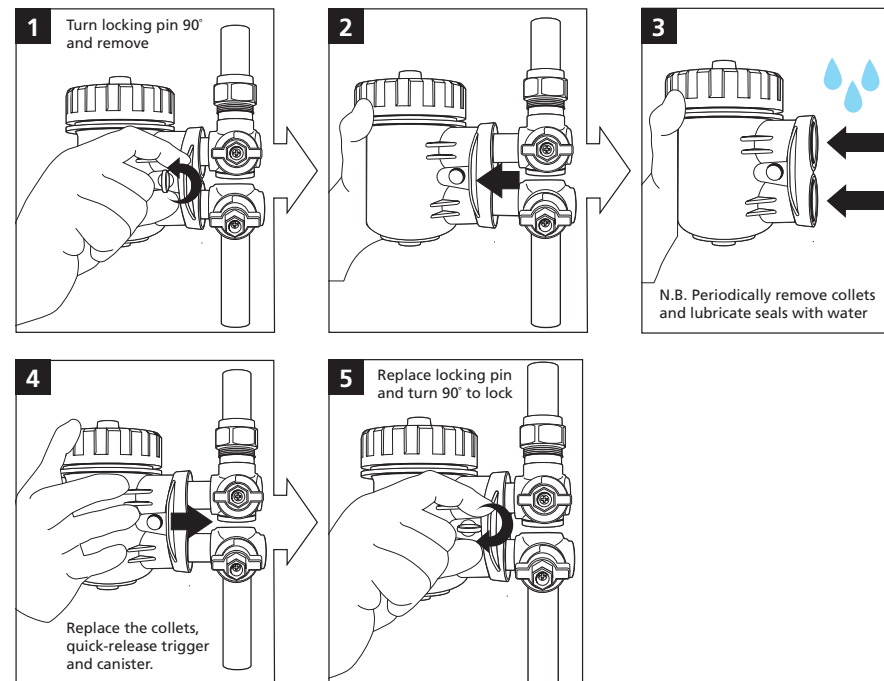


Quick-release trigger

MagnaClean® Micro2 incorporates a secure, quick-release, trigger which enables the filter to be removed and re-installed in seconds.

The industry leading connections are an integral part of the new MagnaClean Micro2 design. They enable easy and speedy removal during annual servicing or to undertake a MagnaCleanse system flush. This also makes it ideal for systems where there is little room to install a filter.

The following instructions are designed to support engineers in the safe and effective servicing of MagnaClean Micro2 using the quick-release trigger.



FOR BEST RESULTS

Install and service with MCI+ Protector, the advanced system inhibitor from ADEY, the industry leaders in heating system maintenance and water treatment.

MagnaClean® Micro 2

Installation and servicing instructions





Maximum working pressure: 87 psi

Maximum working temperature: 203°F

Flow rate: Recommended rate for optimum capture up to 13 gallons per minute

Connection: 3/4" Copper compression for copper pipework with 3/4" FTG to 3/4" NPT female adapters for black iron pipework

CAUTION:

-  MagnaClean filter contains a strong magnet. Keep away from all electrical devices, bank cards and other magnetic devices.
-  MagnaClean filter contains a strong magnet. Caution should be taken at all times when handling if you have a pacemaker fitted.
-  MagnaClean filter is a pressurized device. Always release pressure before servicing.
-  Unit may be hot in operation. Handle with care.

ADEY
PROFESSIONAL HEATING SOLUTIONS

Toll free: 844 378 0442 | Office: 412 406 8292 | Email: info@adeyusa.com
adeyusa.com

M08610 LF2-01-02594

ADEY
PROFESSIONAL HEATING SOLUTIONS

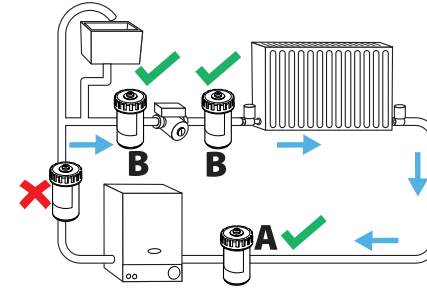
Installation

MagnaClean® Micro2 has been developed by the industry leading and multi-award winning company that pioneered magnetic filtration. ADEY's filters protect over three million heating systems throughout Europe removing virtually 100% of the damaging suspended black iron oxide sludge that builds up in all hydronic heating systems.

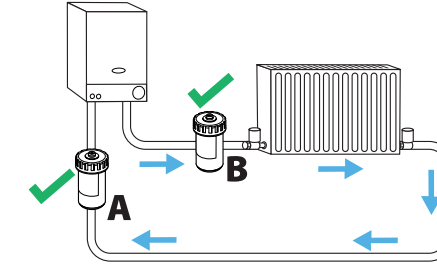
The dual-action filter can be installed anywhere on the main circuit. However, to achieve the best level of protection for the boiler or baseboard, it is recommended that **MagnaClean Micro2** is fitted after the last radiator and before the boiler.

The following instructions are designed to support engineers in the safe and effective installation and servicing of **MagnaClean Micro2** and should be followed at all times.

Any queries should be directed to ADEY on **844 378 0442**



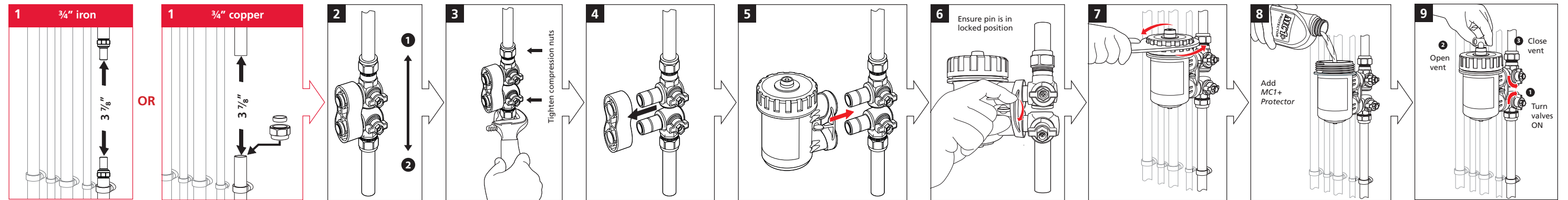
Open vented system



Tankless/ Sealed system

In both diagrams, position **A** is best practice, while **B** is suitable.

Note: We firmly recommend **MagnaClean Micro2** is installed and serviced by a qualified heating engineer.



Servicing

Your system is protected by

**MagnaClean®
Micro2**

Annual service required
adeyusa.com

