



# Submittal Data Information

101-028

## Model 006 Cartridge Circulator

Effective: June 1, 2011

Supersedes: September 21, 2009

Job: \_\_\_\_\_ Engineer: \_\_\_\_\_ Contractor: \_\_\_\_\_ Rep: \_\_\_\_\_

ITEM NO.	MODEL NO.	IMP. DIA.	G.P.M.	HEAD/FT.	H.P.	ELEC. CHAR.

### Features

- Standard High Capacity Output-Compact Design
- Quiet, Efficient Operation
- Direct Drive-Low Power Consumption
- Unique Replaceable Cartridge Design-Field Serviceable
- Self Lubricating
- No Mechanical Seal
- Unmatched Reliability-Maintenance Free
- Bronze or Stainless Steel Construction with Sweat, Threaded or Union Connections


### Materials of Construction

Casing (Volute):	Bronze or Stainless Steel
Stator Housing:	Steel
Cartridge:	Stainless Steel
Impeller:	Non-Metallic
Shaft:	Ceramic
Bearings:	Carbon
O-Ring & Gaskets:	EPDM - Chlorine Resistant

### Model Nomenclature

- B - Bronze, 3/4" Sweat  
 BC - Bronze, 1/2" Sweat, Panel Mount Tappings  
 ST - Stainless Steel, 3/4" NPT  
 SC - Stainless Steel, Union, Panel Mount Tappings
- Variations:**  
 Z - Zoning Circulator  
 VS - Variable Speed, Set Point  
 VR - Variable Speed, Outdoor Reset  
 VV - Variable Speed, Variable Voltage

### Performance Data

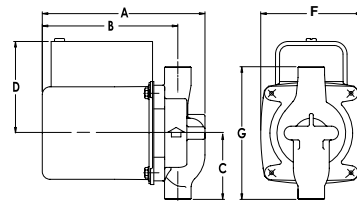
- Flow Range: 0 – 10 GPM  
 Head Range: 0 – 9 Feet  
 Minimum Fluid Temperature: 40°F (4°C)  
 Maximum Fluid Temperature: 220°F (104°C)  
 Maximum Working Pressure: 125 psi  
 Connection Sizes:  
 1/2" Swt, 3/4" Swt, 3/4" NPT or Union
- 
- FOR INDOOR USE ONLY**

### Application

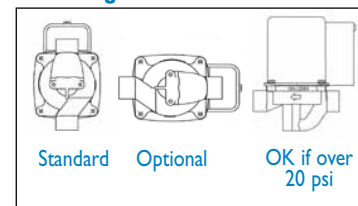
The Taco 006 is designed for circulating hot or chilled fresh water in open or closed loop applications. Typical uses include hydronic heating, domestic hot water recirculation, hydro-air heating/cooling, heat recovery units, water source heat pumps, drain down open loop Solar systems and potable water applications. The unique, replaceable cartridge contains all of the moving parts and allows for easy service instead of replacing the entire circulator. The compact, low power consumption design is ideal for high efficiency jobs.

### Pump Dimensions & Weights

Model	Conn.	A		B		C		D		F		G		Ship Wt.	
		in.	mm	in.	mm	in.	mm	in.	mm	in.	mm	in.	mm	lbs.	Kg
006-B4	3/4" Swt	5-1/8	130	4-1/8	105	2-3/16	56	3-1/16	78	3-5/16	84	4-13/32	112	6.0	2.7
006-BC4	1/2" Swt	5-1/8	130	4-1/8	105	2-1/8	54	3-1/16	78	3-5/16	84	4-1/4	108	6.0	2.7
006-ST4	3/4" NPT	5-5/8	143	4-7/8	124	2	51	3-1/16	78	3-5/16	84	4	102	6.0	2.7
006-SC4-I	Union	5-5/32	131	4-11/32	110	2-31/32	76	3-1/16	78	3-5/16	84	5-15/16	151	6.0	2.7



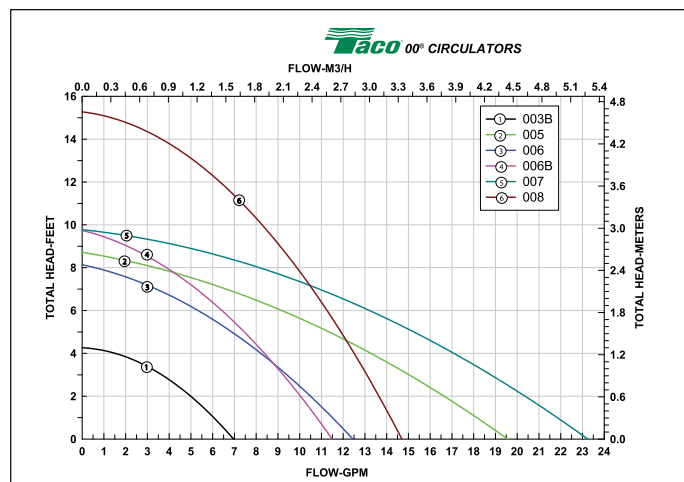
### Mounting Positions



### Electrical Data

Model	Volts	Hz	Ph	Amps	RPM	HP
006 All Models	115	60	I	.52	3250	1/40
Motor Type	Permanent Split Capacitor Impedance Protected					
Motor Options	220/50/1, 220/60/1, 230/60/1, 100/110/50/60/1					

### Performance Field - 60Hz



**Do it Once. Do it Right.®**

TACO INC., 1160 Cranston Street, Cranston, RI 02920 Telephone: (401) 942-8000 Fax: 942-2360  
 TACO (Canada), Ltd., 6180 Ordan Drive, Mississauga, Ontario L5T 2B3 Telephone: (905) 564-9422 Fax: (905) 564-9436  
 Visit our website at: www.taco-hvac.com

Printed in USA  
 Copyright 2011  
 TACO, Inc.